



ValveExpert
VX-NPAD-002



Test Equipment for Servo– and Proportional Valves

Nozzle-Pushing Adjustment Device ValveExpert VX-NPAD-002

Revision: December 2013

Review

Review

- Nozzle-pushing adjustment device ValveExpert VX-NPAD-002 (See Figure 1) is used to adjust nozzles of servovalves with nozzle-flapper torque motors similar to valves Moog 76x series.
- The device is intended for use with the test equipment ValveExpert, which has all the necessary hydraulic ports, pressure transmitters, and software for adjustment.
- The first stage is mounted on the device in the same way as it is mounted on a servo valve.
- This device is used to repair of torque motors, re-push nozzles, and re-shim, as well as replacing, the bushing and spool assembly.
- For professional use only.

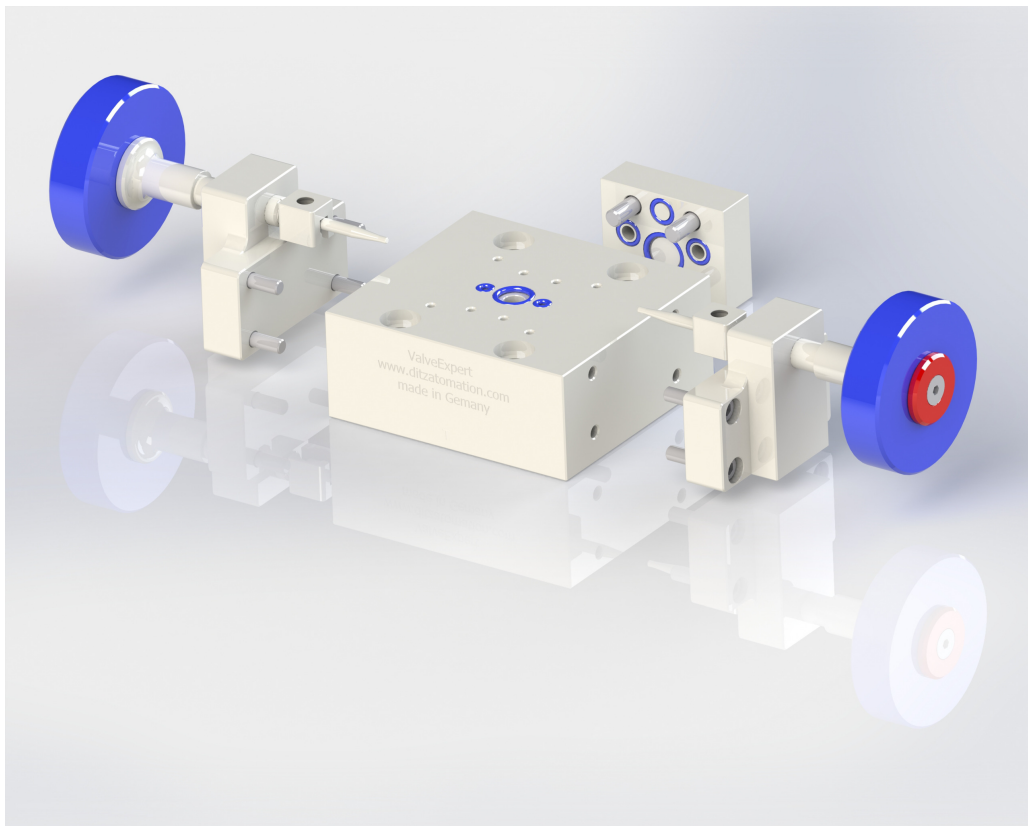


Figure 1: Nozzle-Pushing Adjustment Device ValveExpert VX-NPAD-002

DIETZ automation GmbH
Auf Maien 17
66538 Neunkirchen
Germany
office: +49 6821 8691762
cell: +49 1522 8712097
shashkov@dietzautomation.com
www.dietzautomation.com

USt. ID Nr.: 219 401 070
Geschäftsführer: Dr. Mikhail Shashkov
Handelsregister: AG Saarbrücken HRB 12729
©2013 Dr. Mikhail Shashkov / DIETZ automation GmbH

